

WWW.SETCOTIRE.COM



800.634.2381 | 580.286.6531  
sales@setcotire.com

# CELEBRATING OVER 30 YEARS OF FLAT-FREE TIRES





# SUSTAINABILITY

## WE ARE THE FIRST

Like Columbus, Armstrong, and those that blazed the trails before us, we are the FIRST solid tire manufacturer to focus on sustainability. Not just the FIRST, but we produce the ONLY 100% recycled tire on the market. Recycled SETCO tires and wheels are reused in almost every product we make, which is better for the environment and provides a better quality product.





# IS OUR PRIORITY



MADE IN  
  
U. S. A.



# OUR STORY

At SETCO, we pride ourselves on making the most durable and long lasting solid rubber tires for the most intense job applications. We guarantee that our tires are as tough as a junk yard dog, and ensure that your experience will be second to none with not only our products, but the service you receive from our employees as well. We are one of the world's largest and capable solid rubber tire manufactures and have built our business for decades on a top quality product that increases our customers up-time, and increases their profits. How do we do this? By building a tire that lasts longer and is built better.

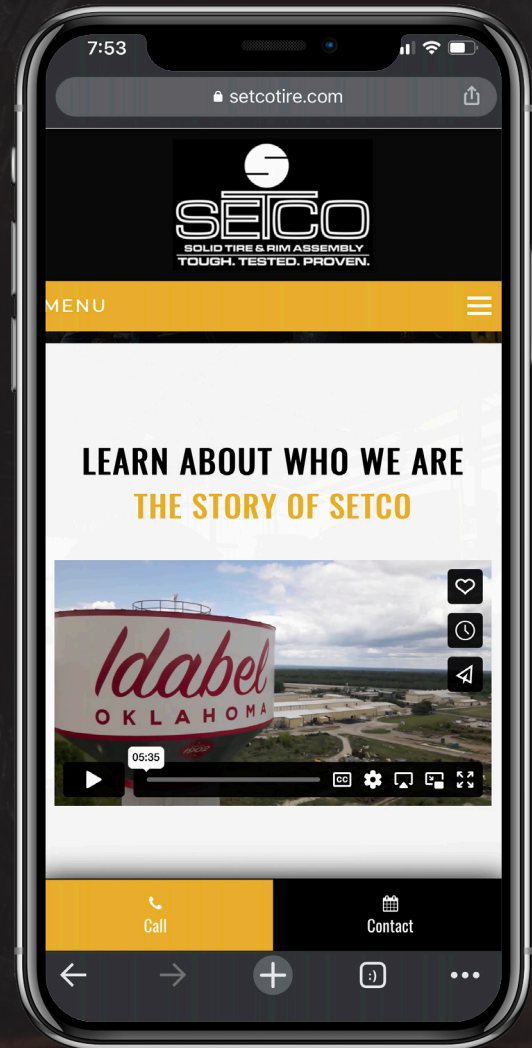
Our distribution centers cover the USA and Europe, and allow our service teams to provide optimum uptime, and help you maintain your fleet. Our skilled sales team will ensure you get exactly the tires needed for your equipment in order to save on maintenance, wear and tear.

Established in 1988, we have 35 years of experience selling tires in over 20 countries. Our meticulous system of building the highest quality tires drives our employee base to perfection every time.

Headquartered in Idabel, OK our plant covers over 100 acres, with 750,000 sq ft under roof. This gives us the ability to take on any job and service the largest operations in the industry.

## WATCH THE STORY!

Learn more about who we are, see our facilities and watch stories/testimonials from SETCO employees and customers.



[Setcotire.com/about-us](https://Setcotire.com/about-us)





# WE ARE PROBLEM SOLVERS

## THE HEARTLAND OF AMERICA

SETCO Solid Tire is located on a 100-acre facility positioned in the central part of the U.S. which makes shipping no more than a 2 to 4 day point to anywhere in the continental United States. SETCO manufactures, from the ground up, solid tires or non-pneumatic tires, for all makes and models of equipment used in off the road applications and abusive environments where only a solid tire will work. Applications such as solid skid steer tires, solid forklift tires, crane tires, haul truck tires, front end loader solid tires, and solid tires for backhoes. SETCO also manufactures rubber cutting edges.

SETCO's in-house machining and fabrication department is the beginning of SETCO's solid tire manufacturing process. Only the finest materials and state of the art equipment are used in creating the industry leading solid tires on rims. SETCO has the ability to custom design solid tires for any application. The dimensions of SETCO solid tires can easily be adjusted to fit any individual needs such as height and width of the solid tire. SETCO's exclusive rubber compound maximizes cut resistance and longevity in all solid tire products.



### CONTENTS

LOADERS	6
CRANE	10
SKID STEER	12

HAUL TRUCK	14
BACKHOE & FORKLIFT	16
RUBBER CUTTING EDGE	18





# LOADER TIRES

## EXPANDED RIM

SETCO's expanded rim Wheel Loader line is available in a variety of tread designs that offer superior durability, extreme traction, and proven performance. This lineup offers more pushing power, load capacity, and reliability when compared to the competition. Our expanded rim lineup offers more sizes than any other manufacturer in the industry. These custom sizes allow you to maximize performance while lowering your overall cost per hour!



MADE IN  
  
U. S. A.



EXPANDED RIM





[Setcotire.com/equipment/loader-tires](http://Setcotire.com/equipment/loader-tires)





# LOADER TIRES

## PRESS ON

SETCO's press on Wheel Loader line is available in a variety of tread designs that offer superior durability, extreme traction, and proven performance. This lineup offers more pushing power, load capacity, and reliability when compared to the competition. Our press on lineup offers more sizes than any other manufacturer in the industry. These custom sizes allow you to maximize performance while lowering your overall cost per hour!



NON  
PRESS ON





[Setcotire.com/equipment/loader-tires](http://Setcotire.com/equipment/loader-tires)





# CRANE TIRES

## EXPANDED RIM

SETCO's expanded rim Crane line is available in a variety of tread designs that offer superior durability, extreme traction, and proven performance. This lineup offers more load capacity and reliability when compared to the competition. Our expanded rim lineup offers more sizes than any other manufacturer in the industry, particularly known for our super single size options. Our super single crane tires replace conventional tires in a dual application. By doubling the tire width, load capacity is increased and the void between tires is eliminated. This diminishes the ability to lodge debris between tires that will chunk out tread and break wheels. These custom sizes allow you to maximize performance while lowering your overall cost per hour!



MADE IN  
  
U. S. A.





[Setcosolidtire.com/equipment/crane-tires](http://Setcosolidtire.com/equipment/crane-tires)





# SKID STEER TIRES

## EXPANDED RIM

SETCO's expanded rim skid steer line is available in a variety of tread designs that offer superior durability, extreme traction, and proven performance. This lineup offers more pushing power, load capacity, and reliability when compared to the competition. Our expanded rim lineup offers more sizes than any other manufacturer in the industry. These custom sizes allow you to maximize performance while lowering your overall cost per hour!



MADE IN  
  
U. S. A.



## PRESS ON

SETCO's press on skid steer line is available in a variety of tread designs that offer superior durability, extreme traction, and proven performance. This lineup offers more pushing power, load capacity, and reliability when compared to the competition. Our press on lineup offers more sizes than any other manufacturer in the industry. These custom sizes allow you to maximize performance while lowering your overall cost per hour!



[Setcosolidtire.com/equipment/skid-steer-tires](https://Setcosolidtire.com/equipment/skid-steer-tires)





# HAUL TRUCK TIRES

## EXPANDED RIM

SETCO's expanded rim Haul Truck line is available in a variety of tread designs that offer superior durability, extreme traction, and proven performance. This lineup offers more load capacity and reliability when compared to the competition. Our expanded rim lineup offers more sizes than any other manufacturer in the industry, particularly known for our super single drive tire options. Our super single tires replace conventional tires in a dual application. By doubling the tire width, load capacity is increased and the void between tires is eliminated. This diminishes the ability to lodge debris between tires that will chunk out tread and break wheels. These custom sizes allow you to maximize performance while lowering your overall cost per hour!



# PRESS ON

Available in select sizes, SETCO's press on haul truck line offers best in class durability and reliability.



MADE IN  
  
U. S. A.



[Setcosolidtire.com/equipment/mining-haul-truck-tires](http://Setcosolidtire.com/equipment/mining-haul-truck-tires)





# BACKHOE TIRES

Solid rubber tires for backhoes are the ideal solution by providing traction and increased pushing power. The versatility of using a backhoe to push and tamp is important as well as the stability when loading.

The rims are manufactured with A36 steel, combined with an exclusive rubber compound that is compression molded, which provides extremely long life, insures NO flats, No failures and No downtime with SETCO solid tires for backhoes.



BACKHOE

[Setcosolidtire.com/equipment/backhoe-tires](http://Setcosolidtire.com/equipment/backhoe-tires)

MADE IN  
  
U. S. A.



# FORKLIFT TIRES

There are so many advantages to solid rubber forklift tires. SETCO solid forklift tires are manufactured with a long lasting rubber compound throughout the entire forklift tire and have more usable rubber as well.

SETCO manufactures a super single solid forklift tire that takes the place of conventional tires in a dual application. By doubling the width of the solid forklift tire, the load capacity is increased and the void between tires is eliminated. By eliminating this dead space on SETCO's solid forklift tires, SETCO diminishes the danger of debris being caught up and causing damage to the solid forklift tire.

All these features add up to no flats and no failures with SETCO solid forklift tires, which make it the most cost effective solid forklift tire available.



[Setcosolidtire.com/equipment/forklift-tires](http://Setcosolidtire.com/equipment/forklift-tires)

MADE IN  
  
U. S. A.







# RUBBER CUTTING EDGE

SETCO's compression molded Rubber Cutting Edge is one continuous piece of rubber, which provides greater strength and increased life. Using 100% natural rubber in the manufacturing process of SETCO rubber cutting edges, there is no harmful steel cord body that could damage the floor.

SETCO's rubber cutting edges not only protect the bucket, but the surface of the floor as well. Rubber is bonded to a metal blade that bolts directly and easily to the bucket. This unique design is the longest lasting rubber cutting edge available, with no premature failures.

SETCO's rubber cutting edges clean the floor more effectively, which keeps the floor drier. SETCO's rubber cutting edge actually increases the floor life while effectively decreasing tire spinning. Rubber cutting edges are available for small and skid steer loaders, backhoes, and all makes and models of front end loaders. SETCO offers rubber cutting edges custom designed to fit a particular bucket or a rubber cutting edge with a universal slot bolt connection to fit a variety of buckets.

Easy installation, greater strength and increased wear are among a few of the advantages of SETCO Rubber Cutting Edges. Rubber leveling pads, mounted at the rear of the bucket, allow the bucket to be operated in the proper angle. This minimizes the pressure of the rubber cutting edge, which in turn increases the life of the rubber cutting edge.

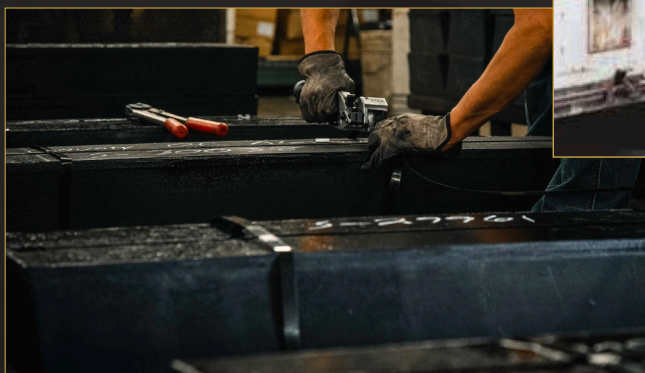




SETCO's rubber cutting edge protects and cleans the surface of the floor while effectively decreases tire spinning.

Rubber edges are available with 3" of rubber for skid steers, 4", 5", & 9" of rubber for various size loaders.

Rubber leveling pads, mounted at the rear, allow the bucket to be operated at the proper angle, minimizing pressure on the cutting edge, increasing longevity.



SETCO offers "combo" edges with steel wear guards for added durability.

[Setcosolidtire.com/cuttingedges](http://Setcosolidtire.com/cuttingedges)

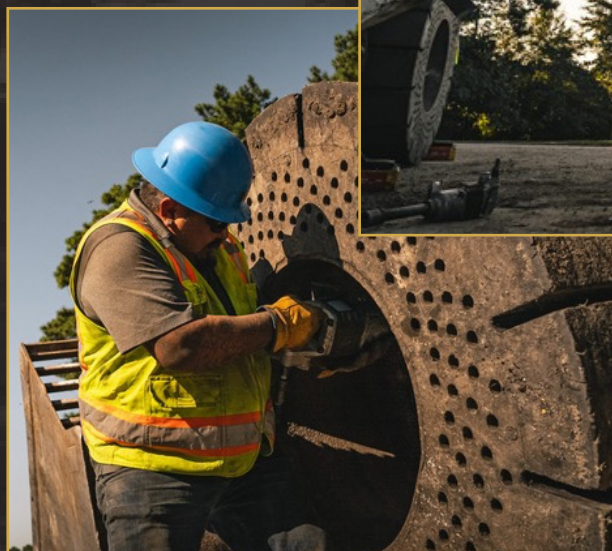




# SOLID TIRE SERVICE PROFESSIONALS

We are here for more than just the initial sale. Utilizing state of the art trucks and tools, who is better to service SETCO tires on your mobile equipment other than SETCO trained technicians? Utilizing SETCO TMS, SETCO technicians will make sure we keep your tires rotated on an as needed basis to ensure you get the full potential life out of your tires, as well as keep track of your tire wear to predict future tire needs. SETCO technicians ALWAYS use calibrated torque guns to ensure your tires stay where they need to, bolted to the machine. SETCO offers service in select markets around the country and are constantly adding more locations (check with your local rep for more details)!









# SETCO UK

For our customers in Europe our 6,500 sq ft warehouse in Birmingham, UK stocks the most popular tyres and rubber cutting edges, making them available to our European customers with very short lead times. Further, our 300t tyre press at the facility is more than capable of handling any solid tyre pressing requirements. With a large stock of popular OEM rims and a network of trusted tyre fitters, SETCO offers a fully fitted service on all solid tyre purchases in the UK.





WWW.SETCOTIRE.COM

800.634.2381 | 580.286.6531  
sales@setcotire.com

# WORLDWIDE LEADER IN SOLID RUBBER TIRE TECHNOLOGY

## IN GOOD TIMES OR BAD

When markets boom, you need to get the scrap out. When markets are tough, you need low operating costs. Our online Tire Management System (TMS) provides real-time data on your tires (directly to your device) for long-lasting service. Only available at SETCO Solid Tire and Rim Assemblies. Trust SETCO!

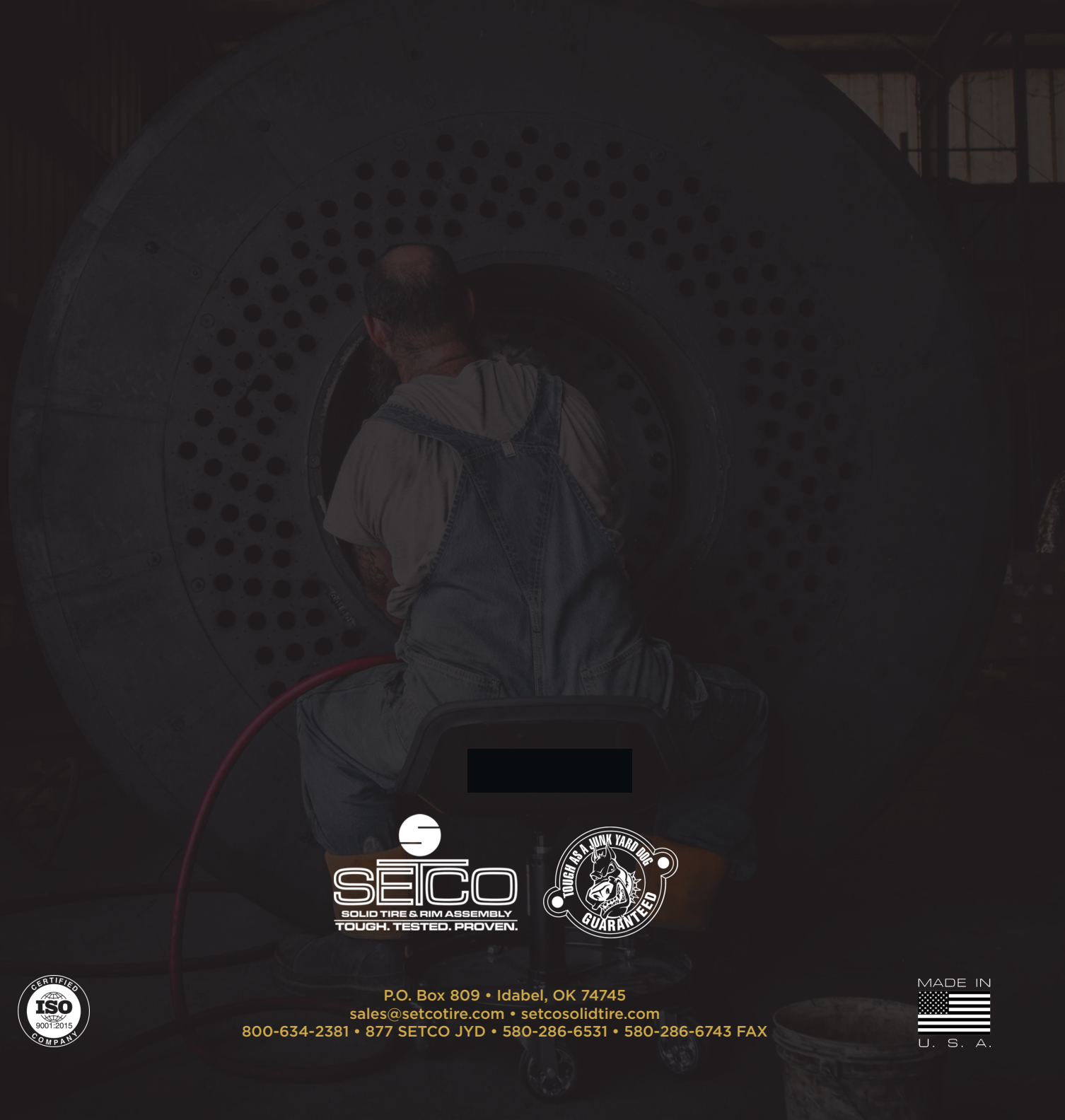
- American made, we have product available for immediate shipment.
- Our vented tire, built for larger loaders, reduces overheating.
- Adaptable center plates allow assemblies to be interchanged.
- Our proprietary rubber blends provide exceptional wear, delivering longer tire life.



LEARN MORE ABOUT SETCO TMS AT SETCOTIRE.COM







P.O. Box 809 • Idabel, OK 74745  
sales@setcotire.com • setcosolidtire.com  
800-634-2381 • 877 SETCO JYD • 580-286-6531 • 580-286-6743 FAX

